

DeltaPipe Cover

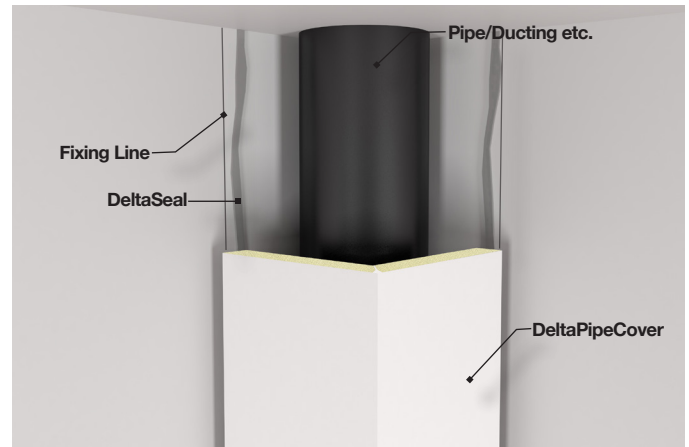
No More Studding! No More Plastering!



DeltaPipeCovers are smooth faced insulating profiles used to cover exposed pipe ducting. The covers are robust and are fixed in place using DeltaSeal. The unique structure does not require a supporting stud framework, making installation quick and easy.

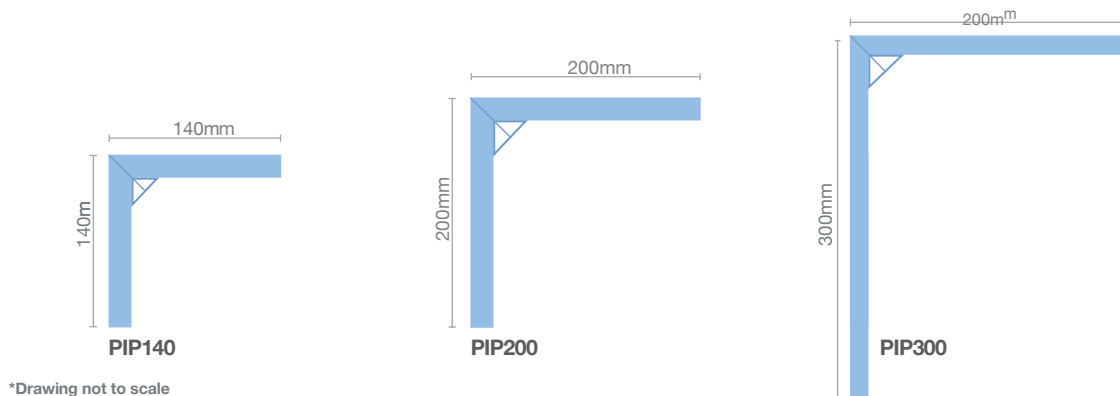
DeltaPipeCovers can be trimmed to suit site dimensions using a standard hand saw. The unique smooth hard wearing surface can be painted to match existing plaster walls or tiled. DeltaPipeCovers do not require a skim coat finish.

Simply cut to height, glue in place, job done.



Technical Data

Properties	Value
Compressive Strength (10% compression)	300 kPa
Thermal Conductivity to BSEN 13164 (5 years)	0.033 W/Mk
Water Absorption by volume tested to BSEN 12087	0.6%
Density (foam core only)	36 kg/m ³
Temperature Range	-50°C, + 75°C
Fire Performance BS 476 part 6,7 surface spread of flames / EN 13501-1	Class O / Euroclass E



Product ID	Thickness	Size	Length	Weight
PIP140	20mm	140mm x 140mm	2400mm	3.85 Kg
PIP200	20mm	200mm x 200mm	2400mm	5.63 Kg
PIP300	20mm	300mm x 200mm	2400mm	7.03 Kg

What's Under Your Tiles? For more information or bespoke sizes to suit your needs please contact head office.